



REGIONAL TRANSPORTATION COMMISSION

Metropolitan Planning • Public Transportation & Operations • Engineering & Construction

Metropolitan Planning Organization of Washoe County, Nevada

SOUTHEAST CONNECTOR AND PYRAMID/MCCARRAN POST CONSTRUCTION

**Nevada Transportation
Conference**

Silver Legacy, Reno

May 7-8, 2019



SOUTHEAST CONNECTOR

p
a
r
k
s

e
n
o



Regional Transportation Commission of Washoe County



February 2018

Purpose for Project



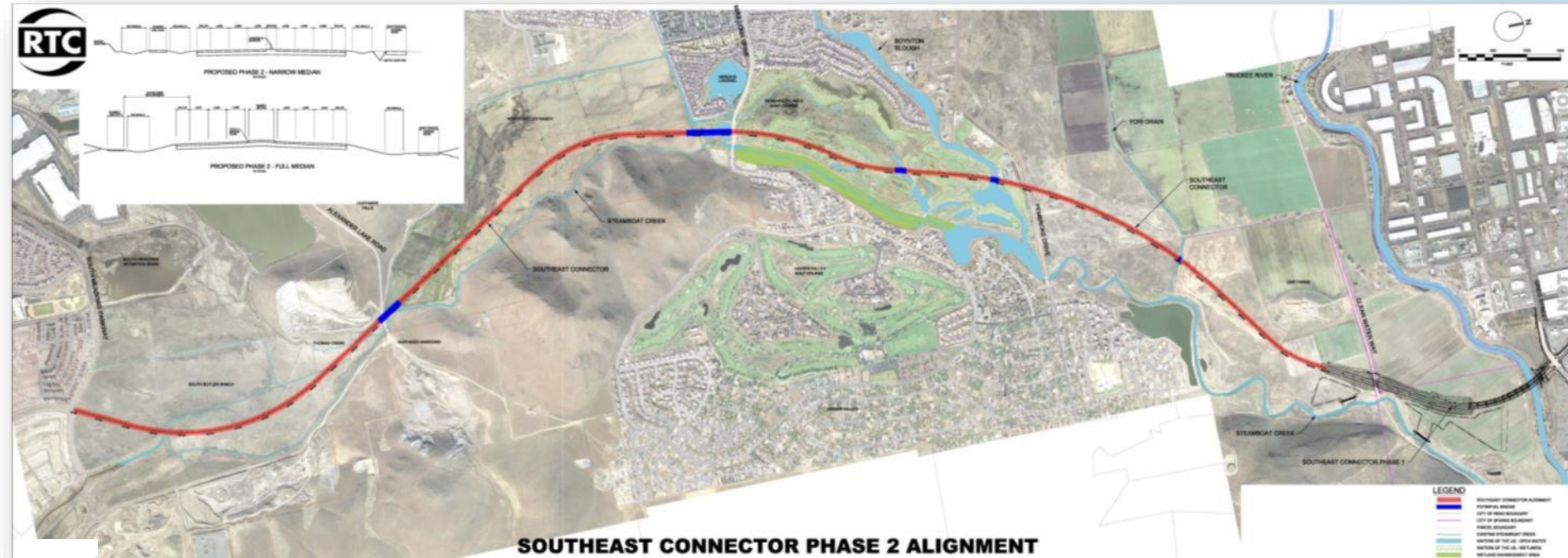
SOUTHEAST CONNECTOR

Project Challenges

- Community opposition
- Critical flood zone
- Mercury containing soils
- Wetlands / wildlife habitat



Project Overview: SouthEast Connector Alignment



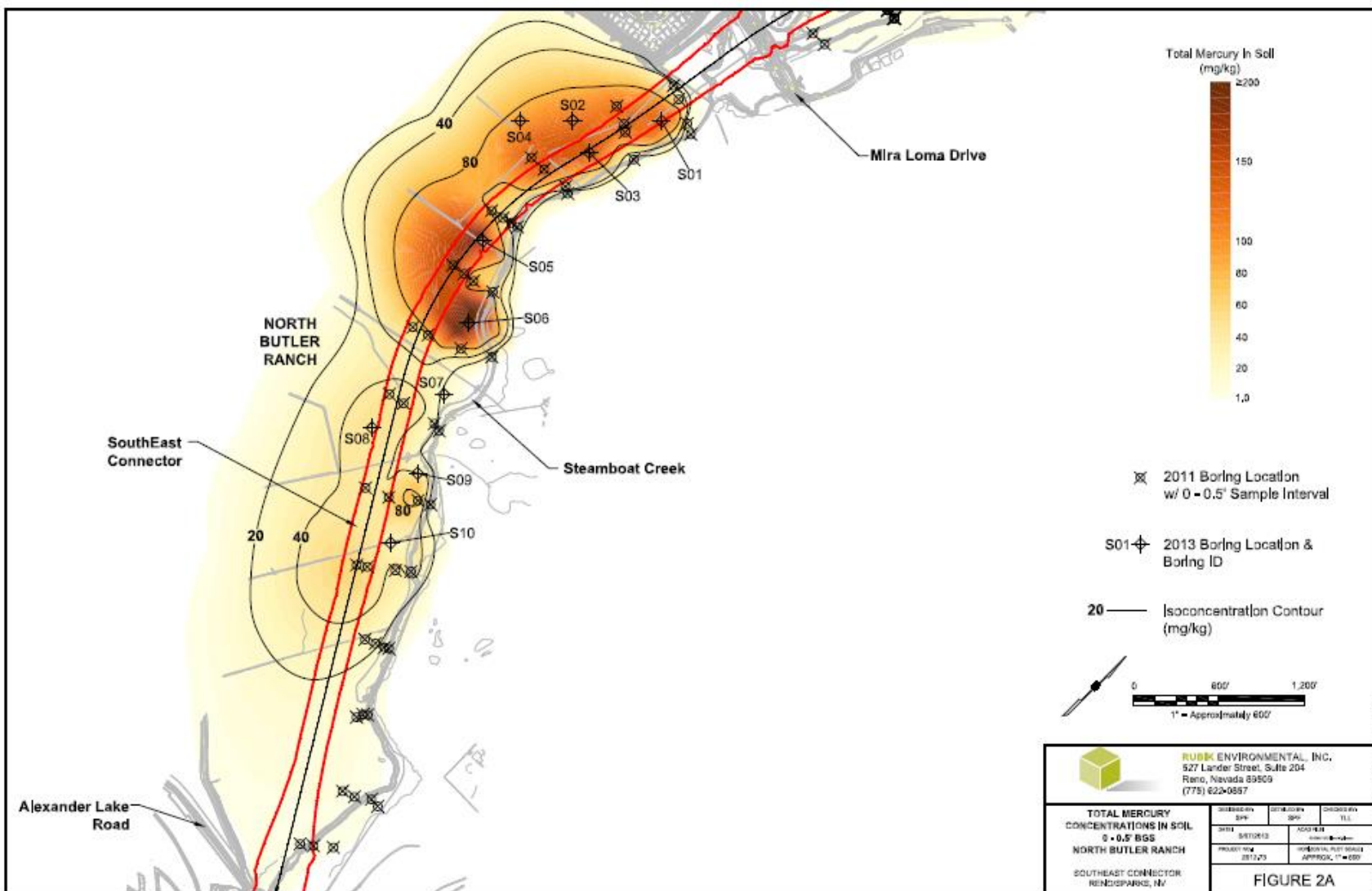
Phase 2

Phase 1

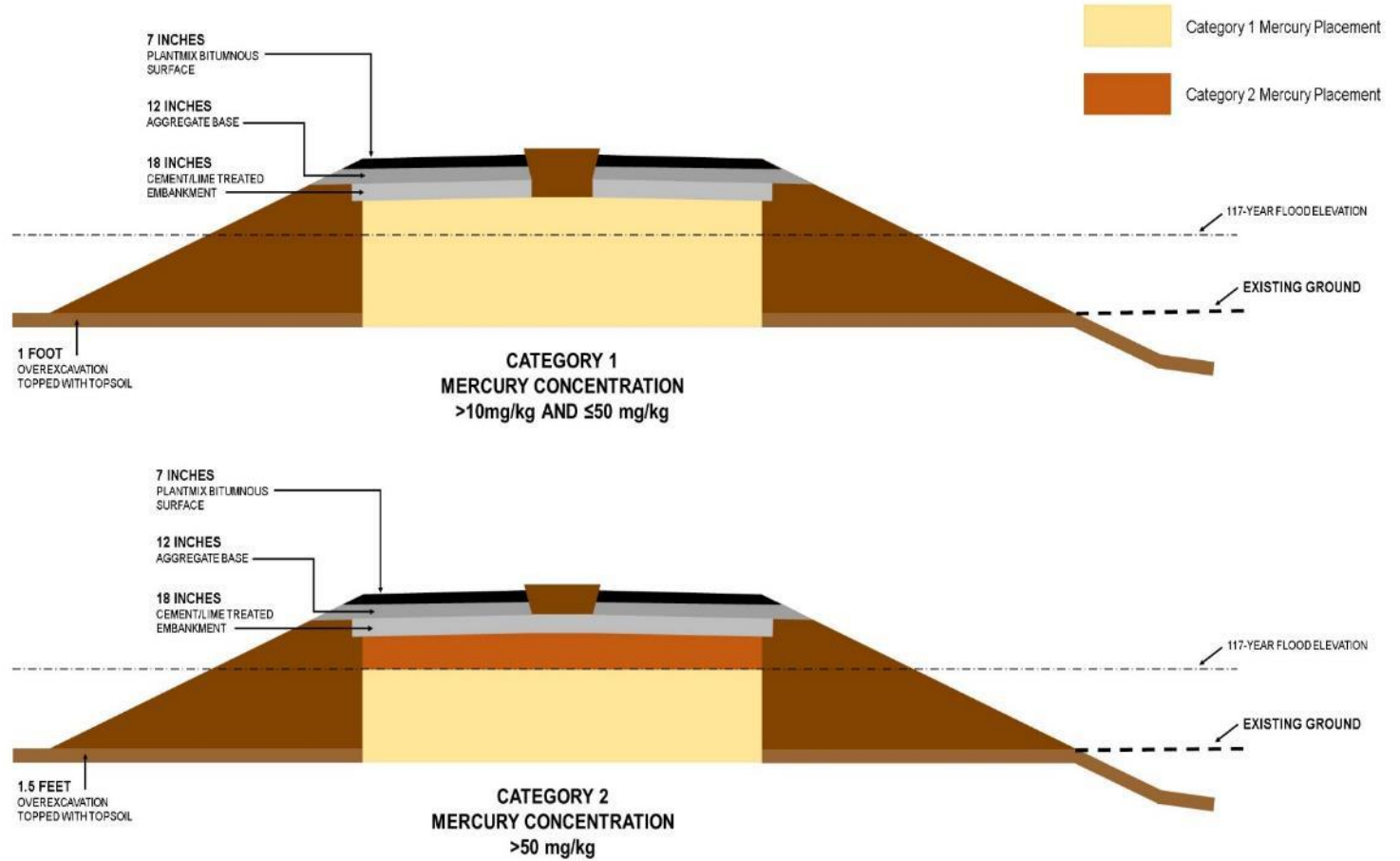
Whitetop Infested Wetlands



Mercury Map



Soil Containing Mercury





USACE 404 Permit Conditions

- 5 General Conditions
- 17 Special Conditions
 - Memorandum of Agreement
 - Section 401 Water Quality Certification
 - Sampling and Analysis Plan
 - Mitigation and Monitoring Plan
 - Financial Assurances
 - Dewatering Plan
 - BMP's
 - Weed Management Plan

Trash Removal



July 14, 2016





March 15, 2017



September 24, 2017









Wildlife Under-crossings



Wild Life Fence



Power Poles



Protect Wildlife



Phase 2 Construction Summary



- Granite Construction (CMAR)
- Began June 2015
- Completed July 2018
- \$152.4 million contract
- \$3.5 million CO's (2.5%) to date





REGIONAL TRANSPORTATION COMMISSION

Metropolitan Planning • Engineering & Construction • Public Transportation & Operations

Metropolitan Planning Organization of Washoe County, Nevada

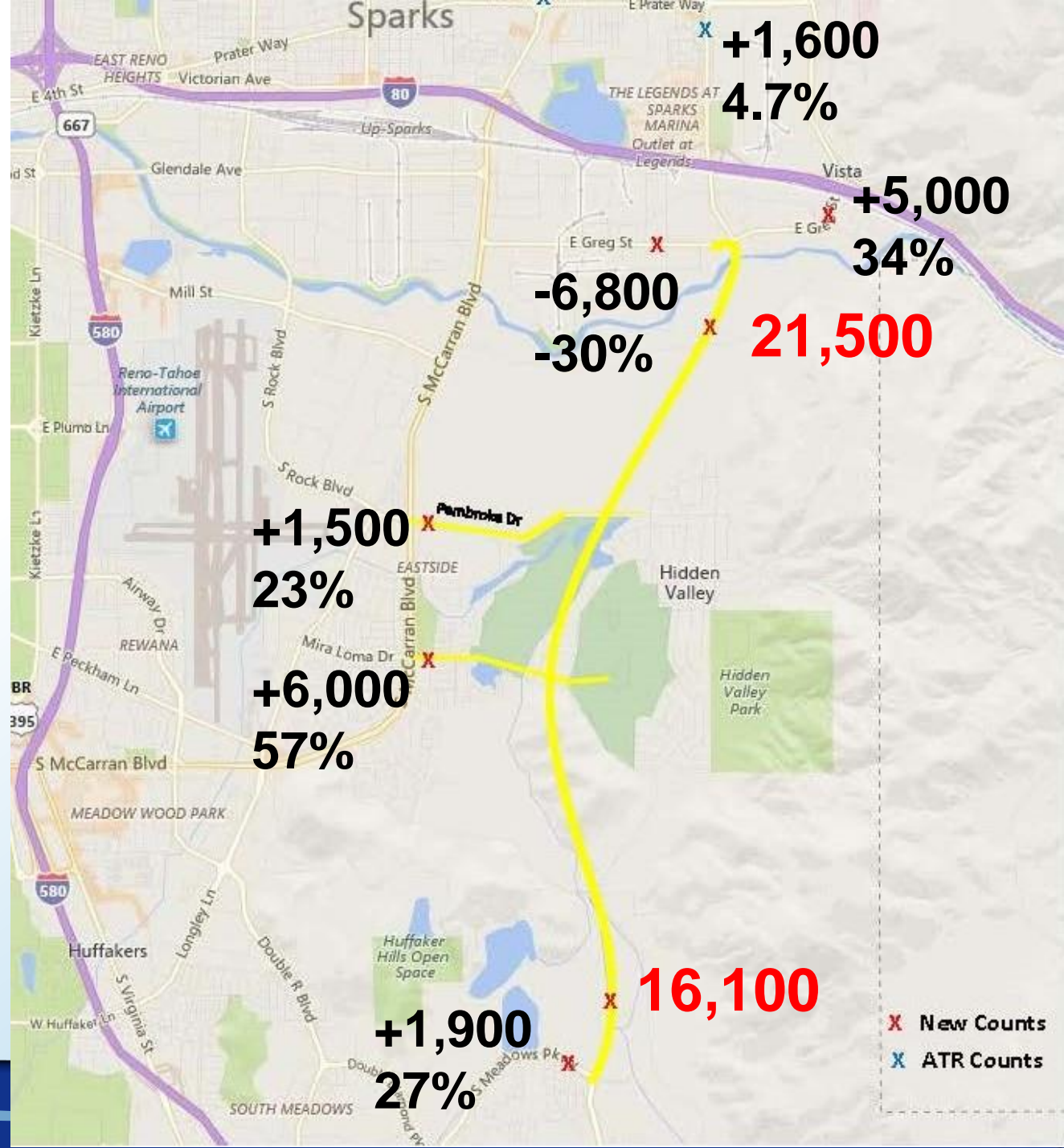
SOUTHEAST CONNECTOR



Pre-Grand Opening
Fun Run, Bike, Walk Event



Traffic Impacts



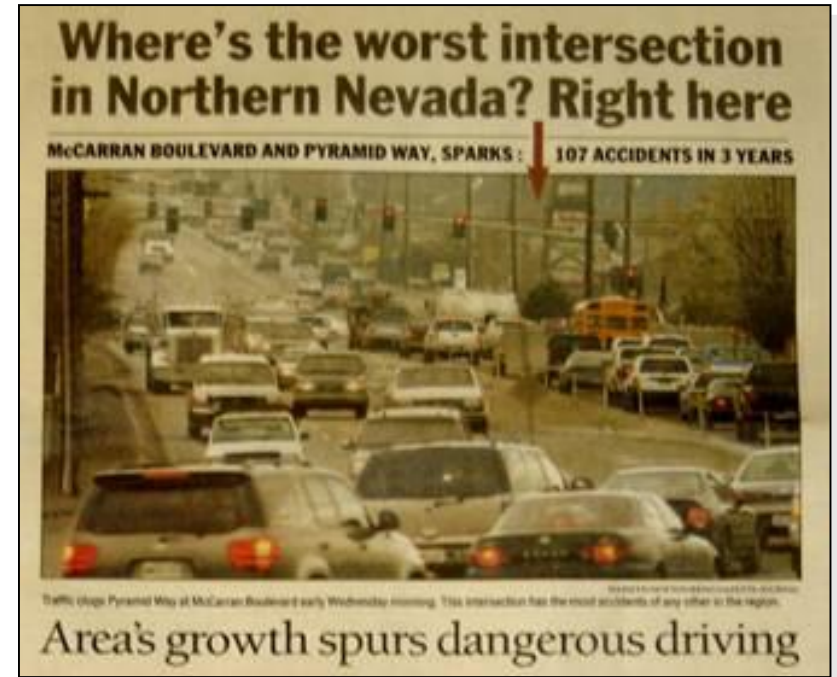
Pyramid/McCarran Intersection Improvement Project



Pyramid/McCarran Intersection Improvement Project



- 60,000 Vehicles a Day
- In Development for 12 Years
- 60+ Public Meetings
- \$73,000,000 in Federal Funds
- **Completed November 2017**



TURNING SPARKS' BUSIEST
INTO SPARKS' **BEST.**

Your RTC. Our Community.



The Project Partners







***“We aren’t just building a road,
we’re building a neighborhood.”***

Demolition



Traffic



Utility Relocations



Utility Relocations



Landscaping



Project Completion – November 20, 2017







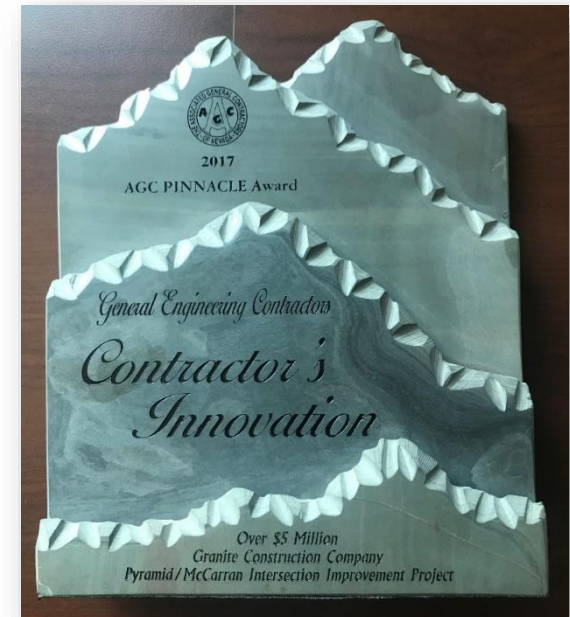
Awards



**2018 International Partnering Institute John L. Martin
National Partnered Project of the Year Diamond Award**

**2017 Associated General Contractors Pinnacle Award for
Contractor Innovation**

**2017 NDOT Excellence in Partnering
Gold Award**



What's Next?

PM Back-up

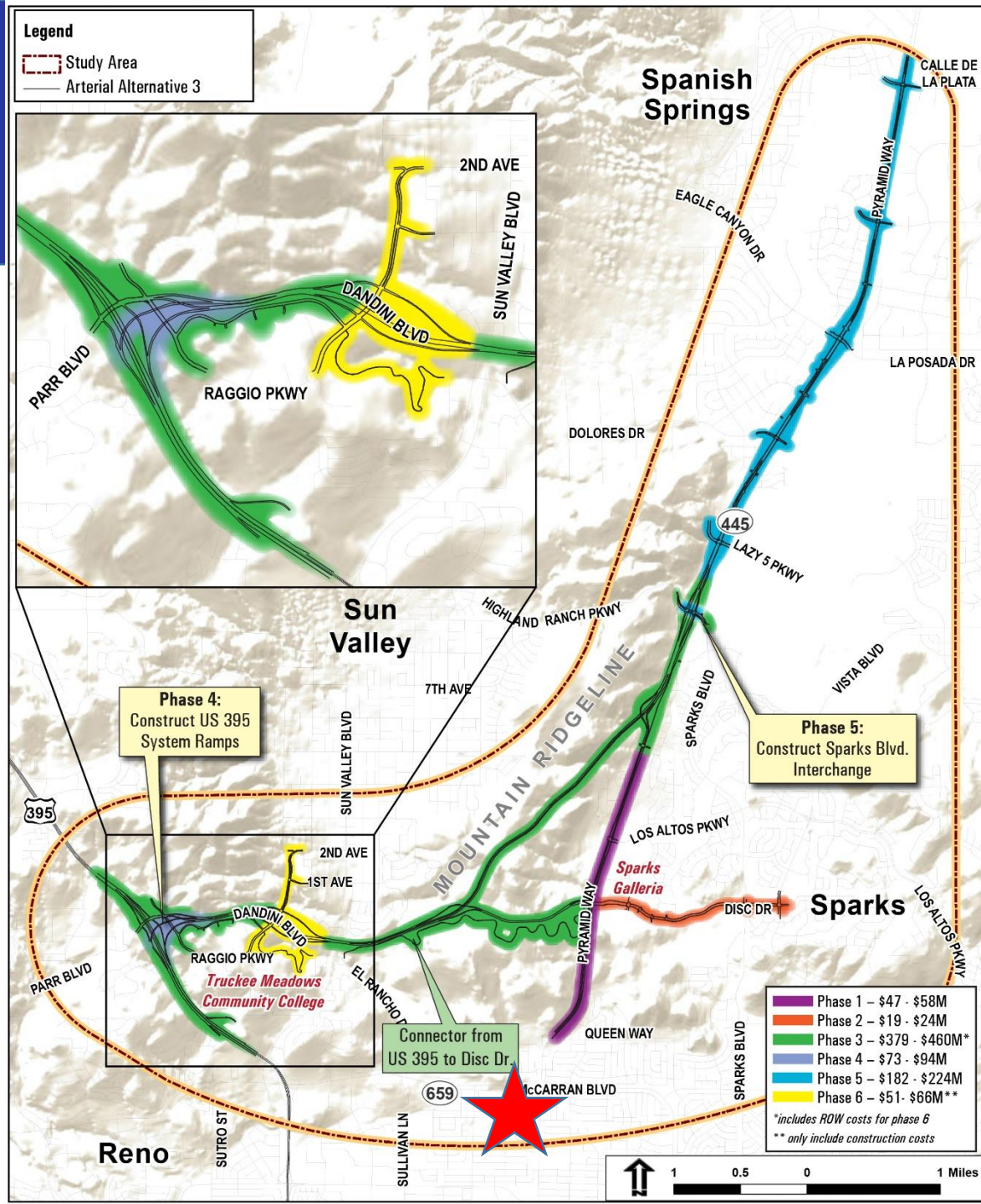


What's Next?

Pyramid/395 Connection



Pyramid/McCarran
Intersection





Scott Gibson, P.E.
Project Manager
775-335-1874
sgibson@rtcwashoe.com

www.rtcwashoe.com

Your RTC. Our Community

